



**MVP Ministers, Commissioned Ruling Elders, Ruling Elder Commissioners, Corresponding Members, and other voting members of Presbytery:**

Grace and Peace to you!

**Our upcoming MVP Stated Meeting via Zoom begins on Tuesday, February 21 at 10:00 a.m..**

No registration for this presbytery meeting is needed.

On the 21st, simply click the link below to join the meeting. If you are experiencing difficulty on that day, our Zoom Troubleshooter is Rev. Cathi King – cell 734-306-3585

## **ZOOM LINK FOR February 21 STATED MEETING:**

**<https://us02web.zoom.us/j/2898292553>**

We are excited about our annual virtual Stated Meeting, which allows us to stay safe in winter weather, while gaining ability to invite special guests. If you have any questions, please don't hesitate to contact me, Stated Clerk Dean McGormley (734-497-8069), or the MVP Office.

**Blessings and Joy!**

**Matt**

609-216-0093 or [matt@maumeevp.org](mailto:matt@maumeevp.org)

Rev. Dr. Matt Meinke  
General Presbyter  
Maumee Valley Presbytery

MAUMEE VALLEY PRESBYTERY  
Stated Meeting

ZOOM MEETING  
Tuesday, February 21, 2023

**9:30 ZOOM CHECK IN BEGINS FOR PRESBYTERY MEETING**

**10:00 GETTING ORGANIZED .....**

Chas Myers

Moderator Chas opens the meeting with prayer The Moderator calls the meeting to order and determines a quorum is present.

Adoption of the Docket

Dean McGormley

*ON MOTION:* To approve the docket.

Seating of Corresponding Members

*ON MOTION* to seat as corresponding members: Chip Hardwick(Miami Valley), Michael Gehrling.

*ON MOTION* to grant privileges of the floor to Ward Wilson (RE Brooklyn Pres Ch)

**10:10 WORSHIP (Communion as part of worship) (attachments 3 & 4)**

**11:00 CAUTION OMNIBUS MOTION**

FOLLOWING ARE ALL THE MOTIONS TO BE ACTED UPON TODAY. THE CLERK WILL MOVE THE ENTIRE LIST IN ONE MOTION. **IF YOU WISH TO DISCUSS ANY OF THESE MOTIONS BEFORE VOTING, THE MODERATOR WILL ASK WHAT NEEDS TO BE “PULLED” FROM THE OMNIBUS MOTION IT ONLY TAKES ONE PERSON TO REQUEST THAT AN ITEM BE “PULLED”**

**ON MOTION THAT THE FOLLOWING BE APPROVED:**

**FROM THE CLERK**

- A** To approve Minutes from November 22, 2023  
To approve minutes of the Commission to install Doris Chandler (attachment 5)  
To approve the resignation of Rev. Karen VanderPloeg from Leadership Commission and as Journal Clerk effective March 12, 2023. (Karen has received a call outside MVP)

**FROM CENTRAL SUPPORT**

- B** To approve that \$15,000 be spent from Camp fund to help Kirkmont with repairs

**FROM LEADERSHIP COMMISSION/COMMITTEE ON MINISTRY**

- C** Regarding Glendale Presbyterian Church: **ON MOTION** that Upon receipt of the request of the congregation, Maumee Valley Presbytery concurs with the dissolution of the congregation with all assets and liabilities to be transferred to Waterville Presbyterian Church.

The meeting of the congregation is Sunday, February 19, 2023 to approve the dissolution of the congregation and members will transfer to Waterville Presbyterian Church on April 9, 2023 (Easter). This has been in conversation for several months.

**11:05 NOMINATIONS** (cannot be part of Omnibus Motion as there must be a time for nominations from the floor.

**ON MOTION** to elect Leo Pech TE to serve on Mission Commission of MVP

**11:10 REPORTS FOR COMMISSIONS AND CENTRAL SUPPORT AND MVP LEADERS**  
**CENTRAL SUPPORT**

Central Support (Attachments 6 & 7) Katie Treadway  
 Approval for Kirkmont to solicit funds from member churches of MVP..

**LEADERSHIP**

Report (Attachment 8) Ann Wasson

**Actions taken on behalf of Presbytery:**

1. **Approved** the terms of call between the Rev. Jan Desterhaft and First, Montpelier. The terms of call, effective January 15, 2023 in sum are:
 

Salary	\$ 32,680
Housing	14,000
Total effective salary for pension dues	\$ 46,680
SECA offset	\$ 3,571.02
 Total	 50,251
Full pension and medical, death and disability	
Reimbursables	\$3,200
Continuing Ed allowance	1,200

Total terms work out to \$ 72,845.22

4 weeks vacation including 4 Sundays and weeks continuing ed time, including 2 Sundays
2. **Appointed** Bob Butcher as Moderator of Session for Bluffton. The Pastor Nominating Committee is elected and has been trained.
3. **Approved** the Installation Commission for the Rev. J.H. Vanlal Hruaia on Sunday, Dec 18 at 3 pm at First Presbyterian Church, Van Wert OH with the following members:
 

Chas Myers, Moderator, Billy Knoll (RE Van Wert), the Revs. Don Leckrone, Tom Steensma and Ann Wasson, with guest, the Rev. David Van Dam (Petoskey MI) invited to preach the sermon.
4. **Approved** the following validated ministries of minister members of the presbytery for the calendar year 2023, and authorized the Stated Clerk to sign and file any necessary documentation during the year for:
  - a. Julie Kling, Terra State Community College (she is also temporary supply pastor at First, Fremont)
  - b. William Middleton, US Navy chaplain
  - c. Susan Rowland Miller, Habitat for Humanity

- d. Amy Remaklus, Director of Toledo Campus Ministry
  - e. Stephen Speakman, Mercy St Vincent Hospital, Director of C.P.E. program, Toledo, Ohio
  - f. Matthew Zuehlke, pastor at Zion Evangelical Lutheran Church, Gibsonburg, OH (full communion partner ELCA)
5. **Renewed** the temporary supply contract between Heather Johnston- Deeb and LaSalle Presbyterian Church effective January 1, 2023 - part time - \$ 21, 450 (20-25 hours per week) with 4 weeks vacation including 4 Sundays.
  6. **Renewed** the CRE contract for 2023 between Nancy Berkheiser and West Unity, up to 25 hours per week. New terms are \$ 2400 per month, plus \$ 600 continuing ed. Reimbursables at \$ 1600. 2 weeks including Sundays for Continuing Ed and 4 weeks including 4 Sundays for vacation.
  7. **Approved** the temporary supply contract between Huron and Sara Hodsden for 1 year beginning January 1, 2023: \$ 52,500 salary, 6, 000 housing, \$ 4475 403b contribution, total effective salary of \$ 62975; \$ 6298 pension dues, \$ 4400 professional expenses; 4 weeks vacation, 2 weeks study leave, including Sundays.

**Announcements:**

Thank you to the congregation leaders who have sent in their AR-3 forms with pastor, CRE and temporary supply contract information; to be approved by Presbytery at the May meeting. If you have not had a chance to get that report into the Presbytery office, please do so as soon as possible.

**Comings and Goings**

Comings: Jan Desterhaft, new pastor at First Montpelier

Goings: Karen VanderPloeg, moving to Madison, Indiana

**FROM DISCIPLESHIP COMMISSION**

Report (5min) (attachment 9)

David Hammond

**FROM MISSION COMMISSION**

Two presenters:

Cathi King

**Ward Wilson** from the Brooklyn Presbyterian Church will be giving a 5 minute plug for a fall PDA trip. Brooklyn went last year and stayed at the First Presbyterian Church Madison KY (5 min)

**AND**

**Michael Gehrling** 1001 Worshipping Communities. (25 min) (attachment 10)

Presbytery Moderator (5 min)

Chas Myers

General Presbyter - with necrology (25min)(attachment 11, 12, 13, 14) Matt Meinke  
 Synod Report (5min) Attachment 15) Tom James

12:15

**ALL GENERAL ASSEMBLE OVERTURES  
 PRESENTED FOR VOTE BY OMNIBUS MOTION**

THE CLERK WILL MOVE THE ENTIRE LIST IN ONE MOTION. HE WILL THEN READ A BRIEF SYNOPSIS OF EACH OVERTURE. **IF YOU WISH TO DISCUSS ANY OF THESE OVERTURES BEFORE VOTING, PLEASE RESPONDE WITH ONE WORD "PULL"**

**The moderator or clerk recognize the request to remove the overture from the omnibus motion and will continue reading the remainder of the overtures. Upon the conclusion of the reading of the overtures, all overtures not pulled will be voted on ad a single motion. The overtures pulled will be discussed and voted on at the May meeting of MVP. *IT ONLY TAKES ONE PERSON TO REQUEST THAT AN ITEM BE "PULLED"***

12:05 **MOTIONS REMOVED FROM THE OMNIBUS MOTION FOR DISCUSSION AND ACTION**

**ON MOTION** that the meeting be adjourned with prayer

**MEETING ADJOURNED WITH PRAYER**

**The next regular meeting of Maumee Valley Presbytery will be Tuesday, May 16, at Bowling Green First, beginning at 3:00 p.m..**

Attachments:

- |                                |                                  |
|--------------------------------|----------------------------------|
| 1. Zoom Invite                 | 9. Discipleship Report           |
| 2. Docket                      | 10. 1001 Worshipping Communities |
| 3. Bulletin                    | 11. General Presbyter Report     |
| 4. Called to Share the Love    | 12. Necrology                    |
| 5. Doris Chandler installation | 13. Invitation to Commissioning  |
| 6. Central Support Minutes     | 14. Ordination Milestones        |
| 7. Financials                  | 15. Synod                        |
| 8. Leadership Report           |                                  |

**IMMEDIATELY FOLLOWING THE MEETING, ALL ARE INVITED TO A CONTINUED PRESENTATION ON 1001 WORSHIPPING CONGREGATIONS WITH MICHAEL GEHLING**



## Presbytery Worship

First Presbyterian Church of Blissfield and Palmyra Community Presbyterian Church

February 21, 2023

Silence

**THE GATHERING**

Welcome

Opening Hymns:

Sing Hey for the Carpenter  
Called to Share the Love

Call to Worship

Let us come together to worship our Lord and Savior.

**We gather to sing Christ's praises and to offer our hearts in devotion.**

We come from many different places, with different backgrounds and experiences, but we are united in our love for God.

**With one voice, let us lift up our hearts and our hands in worship.**

As we gather here today, let us remember that God is always with us.

**God is our refuge, our strength, and our source of hope.**

So let us open our hearts to God's presence, and allow his love to fill us.

**May our worship be a pleasing aroma to the Lord, and may our hearts be transformed by God's grace.**

Let us worship the Lord with joy and thanksgiving, for God is worthy of our praise.

**To the Lord be all glory, honor, and power, now and forevermore. Amen.**

Call to Confession

Prayer of Confession

**Dear God,**

**We come before you today with heavy hearts and broken spirits. We confess that we have failed to live up to your standards of love, peace, and compassion. We have participated in violence in thought, word, and deed, causing harm to our siblings in the human family.**

**We confess that we have been quick to judge and slow to forgive. We have let anger and hatred take hold of our hearts, leading us to do violence against others, both physically and emotionally. We have neglected to love our neighbors as ourselves, and in doing so, we have failed to reflect your love to the world.**

**Lord, we ask for your forgiveness and grace. Help us to turn from our violent ways and embrace your peace. May your Holy Spirit renew our hearts, minds, and spirits, transforming us into the likeness of your Son, Jesus Christ, who came to bring peace to a troubled world.**

**In the name of Jesus, we pray, Amen.**

## ASSURANCE OF PARDON

**Choral Response: “John 3:16 - For God So Loved the World”**

*“For God so loved the world that He gave His only Son, so that whosoever believes in Him shall not perish but have eternal life.”*

#582 “Glory to God Whose Goodness Shines on Me”

**THE WORD**

## PRAYER FOR ILLUMINATION

## SCRIPTURE

Jonah 1

Romans 10:14-15

John 20:19-23

## SPECIAL MUSIC

SERMON “Running from God’s Call”

Rev. Douglas Evans Holmes

**RESPONDING TO THE WORD**

## PRAYERS OF THE PEOPLE

## INVITATION TO THE TABLE

## THE GREAT THANKSGIVING

The Lord be with you.

**And also with you.**

Lift up your hearts.

**We lift them up to the Lord.**

Let us give thanks to the Lord our God.

**It is right to give our thanks and praise.**

It is truly right and just, our duty and our salvation, always and everywhere to give you thanks, Lord, holy Father, almighty and eternal God, through Jesus Christ, your only Son. He is the Word through whom you made the universe, the Savior you sent to redeem us. By the power of the Holy Spirit, he took flesh and was born of the Virgin Mary. He suffered, died and was buried, and rose again on the third day in accordance with the Scriptures. He ascended into heaven and is seated at your right hand. He will come again in glory to judge the living and the dead.

Therefore, we join the choirs of angels and the hosts of the redeemed in proclaiming the glory of your name:



**Holy, holy, holy Lord, God of power and might, heaven and earth are full of your glory. Hosanna in the highest. Blessed is he who comes in the name of the Lord. Hosanna in the highest.**

We give you thanks for the great company of witnesses, the prophets, apostles, and martyrs, who have spoken and acted in faith, who have prayed and suffered, who have confessed and proclaimed your Word. We remember before you this day, especially all those who identify as marginalized, oppressed, and vulnerable, and all those who have died in the faith.

In union with them, we offer to you, from the gifts you have given us, this bread and this cup. We pray you, gracious God, to send your Holy Spirit upon these gifts, that they may be the sacrament of the body of Christ and his blood of the new covenant. Unite us to your Son in his suffering and death, that we may share in his resurrection, through Jesus Christ, our Lord.

By your Spirit, make us one with Christ, one with each other, and one in ministry to all the world, until Christ comes in final victory and we feast at his heavenly banquet.

Through Christ, and with Christ, and in Christ, in the unity of the Holy Spirit, all honor and glory is yours, almighty Father, now and forever. **Amen.**

THE LORD'S PRAYER

WORDS OF INSTITUTION

SHARING OF THE BREAD AND THE CUP

PRAYER AFTER COMMUNION

Hymn            "For Everyone Born"

CHARGE

BENEDICTION

**Please join in reading aloud the bold portions of our worship.**

Musicians:

Diana Maloney

Denny Thompson

# Sing Hey for the Carpenter

## Verses



1. Come with me, come wan - der, come wel - come the
2. Come walk in my com - p'ny, come sleep by my
3. Come share in my laugh - ter, come close to my
4. Come leave your pos - ses - sions, come share out your



world Where stran - gers might smile or where  
side, Come sa - vor a life - style with  
fears, Come find your - self washed with the  
treas - ure. Come give and re - ceive with - out



stones may be hurled; Come leave what you  
noth - ing to hide; Come sit at my  
kiss of my tears; Come stand close at  
meth - od or meas - ure; Come loose ev - 'ry



cling to, lay down what you clutch And  
ta - ble and eat with my friends, Dis -  
hand while I suf - fer and die And  
bond that's re - sist - ing the Spir - it, En -

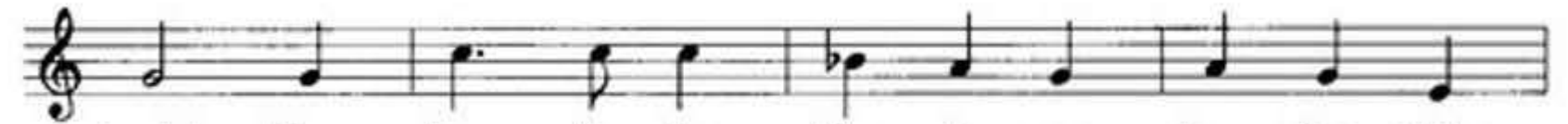


find, with hands emp - ty, that hearts can hold much.  
cov - 'ring that love which the world nev - er ends.  
find in three days how I nev - er will lie.  
a - bling the earth to be yours to in - her - it.

## Refrain



Sing hey for the car - pen - ter leav - ing his



tools! Sing hey for the Phar - i - sees leav - ing their



rules! Sing hey for the fish - er - men leav - ing their



nets! Sing hey for the peo - ple who leave their re - grets!

Text: John L. Bell, b.1949  
Tune: SING HEY, Irregular; John L. Bell, b.1949  
© 1987, The Iona Community, GIA Publications, Inc., agent

Called to Share the Love  
Tune: Beach Spring

Verse 1: We are called to spread the word,  
Of the love of Christ, our Lord.  
To the lost and broken-hearted,  
We'll be a light, to them imparted.

Chorus: With the fire of love burning bright,  
We'll go forth with all our might.  
To share the Good News far and wide,  
For all to hear, and to abide.

Verse 2: In every nation, tongue, and land,  
We'll take the message of salvation's hand.  
With love and grace, we'll reach the lost,  
And at whatever cost.

Chorus: With the fire of love burning bright,  
We'll go forth with all our might.  
To share the Good News far and wide,  
For all to hear, and to abide.

Verse 3: We'll be the hands and feet of Christ,  
In every place, in every life.  
With open hearts, we'll share the way,  
To eternal life, with God to stay.

Chorus: With the fire of love burning bright,  
We'll go forth with all our might.  
To share the Good News far and wide,  
For all to hear, and to abide.

## MINUTES OF THE ADMINISTRATIVE COMMISSION TO INSTALL AS PASTOR

### Rev. Dr. Doris Chandler

The Administrative Commission appointed by the Maumee Valley Presbytery met at First Presbyterian Church of Monroe, MI at 2:40 PM on November 6, 2022 to install Rev. Dr. Doris Chandler as Pastor of First Presbyterian Church of Monroe, Michigan. A quorum was present.

Rev. Kathryn Treadway presided as Moderator and constituted the meeting with prayer.

#### Present were Members of the Commission:

Edward Bettendorf, RE, Firelands Presbyterian Church, Pt. Clinton, OH

Carole Burnworth, RE, Eastminster Presbyterian Church, Toledo, OH

Kim Hooper, RE, First Presbyterian Church, Monroe, MI

Rev. Katie Treadway, Teaching Elder, First Presbyterian Church, Tiffin, OH and Presiding Moderator, Maumee Valley Presbytery

Rev. Tom Steensma, Teaching Elder, Honorably Retired, Maumee Valley Presbytery

Rev. Mary Beth McCandless, Teaching Elder, West Bethesda Presbyterian Church and West Eagle Creek Presbyterian Church

Rev. Karen VanderPloeg, Teaching Elder, First Presbyterian Church of Waterville and Glendale Presbyterian Church, Toledo, OH

1. The commission voted to proceed with the installation of Rev. Dr. Doris Chandler as Pastor of First Presbyterian Church, Monroe, MI. M/S/P
2. The commission voted that the benediction at the conclusion of the service of worship be the concluding prayer for this meeting of the commission; and that the conclusion of the worship service shall constitute completion of the presbytery's charge to the commission. M/S/P

Respectfully Submitted,

Rev. Kathryn Treadway, Moderator, Maumee Valley Presbytery

## Central Support docket

**January 24, 2023 at 1pm via Zoom**

Roll: Katie Treadway, TE, Central Support Moderator; Chas Myers, RE, Presbytery Moderator;  
 Presbytery Vice Moderator; Ed Bettendorf, RE; Peter Haff, RE; Mary Beth McCandless,  
 TE; Dane Nelson, TE; Ken Wessler, TE  
 Matt Meinke, General Presbyter, Ex Officio; David Bartley, Treasurer, Ex Officio, Dean McGormley,  
 Stated Clerk, Ex Officio  
 Excused: *Carole Burnworth, RE,*

### **Call to Order, Prayer, and Devotion – Moderator of Central Support Katie Treadway**

#### **Clerk's Report – Dean McGormley**

Minutes of October meeting approved with one correction about attendance

February meeting---Reminder: Will be held on Zoom

Overtures Presentation will proceed as stated at the November meeting of MVP

#### **Treasurer's Report: Financial Closure Report - David Bartley**

Ended the year in good shape. Dave presented some concerns about financial needs for Kirkmont church camp. MVP camp fund which always needs a minimum of \$200,000 is presently at 221,000. ON Motion to request MVP to send \$15,000 for a special needed repairs. So Ordered. ALSO. ON Motion to allow Kirkmont to approach our member churches seeking funds to help their needs. So ordered

#### **Moderator's Report – Chas Myers**

Chas reported on his involvement in the Van Wert installation.

#### **General Presbyter Report - Matt Meinke**

Matt reported several pastor concerns: Tom Polker's mother died, Dean McGormley had a surgery, Steve Paine, husband of Cathy Johnson-Paine is suffering from neuro muscular troubles with no confirmed diagnosis

Session records review is up and running again for 2023; received insurance bonus from Guide One and upon the treasures recommendation these funds will be placed in general fund of MVP; reminder that loan application for PILP need presbytery approval.

#### **Delinquent Per Capita Task Force Report - Ed Bettendorf No report today**

#### **Visioning for Our Future: Purpose and 2023 Organization – Chas Myers**

Chas reported working on organization

#### **Personnel Team report**

Reviewing all job descriptions and revising manuals.

**Ongoing Discussion: What to do about Bucyrus and Grand Rapids churches?** Dean McGormley

Dean reported that these congregations were never properly released by MVP and their leaving for a new denomination proceeded at a corporate level and not obeying the Book of Order of the PC (USA). Ed Bettendorf and Dan Nelson will investigate the proper way of securing the PC (USA) records from the churches and the final dismissal of same.

Upcoming Presbytery Meeting /Other

**Next Pres meeting February 21,2023 (virtual)**

**Docket prep**

Closing Prayer

.

## Balance Sheet

02/07/2023 01:57 PM

Consolidated - December 2022 Balance Sheet Summary

Page: 1

		Current Year
ASSETS	1000	
CURRENT ASSETS	1050	
CHECKING ACCOUNTS	1100	\$353,919.26
CHURCH REVOLVING LOANS	1401	15,987.95
PASTORAL HOUSING LOANS	1460	99,933.12
LOANS TO STUDENTS	1471	1,264.23
Subtotal Current Assets	1050	471,104.56
NEW COVENANT TRUST	1605	1,443,924.36
TOTAL ASSETS		<u>\$1,915,028.92</u>
LIABILITIES	2000	
CURRENT LIABILITIES	2010	
PRE-PYMTS FROM CHURCHES	2017	\$14,127.60
TOTAL LIABILITIES		14,127.60
FUND BALANCES	3000	
UNRESTRICTED	3100	\$18,251.86
DESIGNATED	3200	
FUNDS IN CKG	3201	50,209.56
FUNDS IN FDTN	3207	425,614.07
Subtotal Designated	3200	475,823.63
MISSIONS PASS-THRU FBS	3300	
GA SHARED MISSION	3316	-680.00
EXTRA COMMITMENT PROJECTS	3370	680.00
Subtotal Missions Pass-thru Fbs	3300	0.00
CHURCH LOAN FBS	3400	
MANDATORY 4% RESERVE FBS	3434	7,997.77
CHURCH REVOLVING FD	3438	47,811.08
PASTORAL HOUSING LOANS	3460	100,293.12
LOANS TO STUDENTS	3470	1,264.23
Subtotal Church Loan Fbs	3400	157,366.20
DONOR DESIGNATIONS	3501	49,252.07
NEW COVENANT TRUST ACCTS	3600	1,200,207.56
TOTAL EQUITY		<u>1,900,901.32</u>
TOTAL LIABILITIES AND EQUITY		<u><u>\$1,915,028.92</u></u>

## Balance Sheet

02/07/2023 02:03 PM

Consolidated - December 2022- Balance Sheet

Page: 1

	Current Year
<b>ASSETS</b>	
<b>CURRENT ASSETS</b>	
<b>CHECKING ACCOUNTS</b>	
Ckg - Operating Bank	\$44,379.72
Ckg - Designated	234,495.36
Ckg - Loans	25,792.11
Ckg - Donor Designated	<u>49,252.07</u>
Subtotal Checking Accounts	353,919.26
<b>CHURCH REVOLVING LOANS</b>	
1st Presb. Church Forest	3,987.95
Delphos	<u>12,000.00</u>
Subtotal Church Revolving Loans	15,987.95
<b>PASTORAL HOUSING LOANS</b>	
Pastoral Housing Asst. Lo	86,668.31
Holmes, Douglas	<u>13,264.81</u>
Subtotal Pastoral Housing Loans	99,933.12
<b>LOANS TO STUDENTS</b>	
Wiesmann Loan	<u>1,264.23</u>
Subtotal Current Assets	471,104.56
<b>NEW COVENANT TRUST</b>	
Cash/Cash Equivalents	67,931.57
<b>BOND FUNDS</b>	371,355.14
<b>EQUITIES</b>	<u>1,004,637.65</u>
Subtotal New Covenant Trust	1,443,924.36
<b>TOTAL ASSETS</b>	<u><u>\$1,915,028.92</u></u>
<b>LIABILITIES</b>	
<b>CURRENT LIABILITIES</b>	
<b>PRE-PYMTS FROM CHURCHES</b>	
Next Year's Per Capita	<u>\$14,127.60</u>
<b>TOTAL LIABILITIES</b>	14,127.60
<b>FUND BALANCES</b>	
<b>UNRESTRICTED</b>	
General Fund Balance	\$5,388.76
Con Ed. Rollover	1,190.00
HRA #6 Fb	8,673.10
Triennium Budget	<u>3,000.00</u>
Subtotal Unrestricted	18,251.86
<b>DESIGNATED</b>	
<b>FUNDS IN CKG</b>	
Pby-Two Cents a Meal Fund	4,059.25
Pastoral Care Fund	23,715.81
Triennium Fund	6,000.00
Presbytery Endowment Fund	11,129.30



**Balance Sheet**

	Current Year
Disaster Relief	5,305.20
Subtotal Funds In Ckg	50,209.56
<b>FUNDS IN FDTN</b>	
King/Dorr St. Taxes	51,249.46
CHURCH CLOSINGS	-1,300.00
Elizabeth J. Watson Fund	24,189.19
GA New Worship Com. Seed	11,116.00
Zion Loan Fd - F	14,096.80
Insurance	16,160.11
New & Redevelopment Fund	75,689.18
Aid to Candidates	8,045.27
CRE Reunion Retreats	5,297.00
Camp Sale Reserve	221,071.06
Subtotal Funds In Fdtn	425,614.07
Subtotal Designated	475,823.63
<b>MISSIONS PASS-THRU FBS</b>	
GA SHARED MISSION	
To GA - General Mission	-680.00
GA SPECIAL OFFERING	
GA Pentecost Offering	236.00
GA Peace/Global Msn Ofg.	-236.00
Subtotal Ga Special Offering	0.00
<b>DISASTER RELIEF</b>	
PDA General Relf DR000148	-200.00
USA Disasters & Emergency	200.00
Subtotal Disaster Relief	0.00
<b>EXTRA COMMITMENT PROJECTS</b>	
Mission Personel E132192	680.00
Subtotal Missions Pass-thru Fbs	0.00
<b>CHURCH LOAN FBS</b>	
MANDATORY 4% RESERVE FBS	
Mandatory 4% Guarantor	6,432.16
Manadatory 4% Ch Ext.R	1,565.61
Subtotal Mandatory 4% Reserve Fbs	7,997.77
<b>CHURCH REVOLVING FD</b>	
CH. EXT REV AVAILABLE FB	31,823.13
CHURCH REVOLVING LOANS	15,987.95
Subtotal Church Revolving Fd	47,811.08
<b>PASTORAL HOUSING LOANS</b>	
Pastoral Housing Asst. Lo	87,028.31
Holmes, Douglas Fb	13,264.81
Subtotal Pastoral Housing Loans	100,293.12

**Balance Sheet**

	Current Year
<hr/>	
LOANS TO STUDENTS	
Wiesmann Loan Fb	1,264.23
	<hr/>
Subtotal Church Loan Fbs	157,366.20
DONOR DESIGNATIONS	
Conger Fund for Pastoral	25,735.65
Triplett & Wolfe Memorial	2,948.38
Pby-Peace/Global Miss. Fu	18,287.72
Synod Grant- Ohio Campus	1,030.32
Pby-Mobile Health Fair Fo	1,250.00
	<hr/>
Subtotal Donor Designations	49,252.07
NEW COVENANT TRUST ACCTS	
Cash/Cash Equivalents Fb	67,931.57
Fixed Income Fb	371,355.14
EQUITIES FBS	760,920.85
	<hr/>
Subtotal New Covenant Trust Accts	1,200,207.56
TOTAL EQUITY	<hr/> 1,900,901.32
TOTAL LIABILITIES AND EQUITY	<hr/> <hr/> <u>\$1,915,028.92</u>

**Income and Expense Statement**

02/07/2023 02:06 PM

Consolidated - December 2022 Income and Expense

Page: 1

		Current Period	Year to Date	Annual Budget	Annual Budget Difference
INCOME	4000				
CONTRIBUTION INCOME	4010				
ADMIN & GOVERNANCE INCOME	4030				
Per Capita Receipts - Pby	4034	\$2,956.72	\$123,779.53	\$128,200.00	-\$4,420.47
Per Capita Receipts - Syn	4036	970.21	15,182.44	16,666.00	-1,483.56
Per Capita Receipts - GA	4038	903.19	44,738.06	46,049.44	-1,311.38
Per Capita Rece - Prior y	4040	0.00	4,511.80	15,000.00	-10,488.20
Subtotal Admin & Governance Income	4030	4,830.12	188,211.83	205,915.44	-17,703.61
PBY MISSION INCOME	4062				
Pby Progr & Mission Gifts	4068	7,681.39	77,539.63	96,000.00	-18,460.37
Presbyterian Women - Msn	4082	10.00	135.00	0.00	135.00
Subtotal Pby Mission Income	4062	7,691.39	77,674.63	96,000.00	-18,325.37
OTHER INCOME	4090				
Other Income-Annuual Fund	4161	1,535.00	5,257.77	5,200.00	57.77
Int<Investments=drawdown	4162	0.00	57,483.39	57,483.00	0.39
Youth Events/ Retreats	4170	0.00	345.00	0.00	345.00
Spiritual Formation	4178-178	0.00	2,090.00	0.00	2,090.00
King/Dorr Property	4202-202	0.00	52,146.78	0.00	52,146.78
Zion Loan Fund Income	4226-226	0.00	542.18	542.00	0.18
Pby -Two Cents a Meal	4232-232	0.00	991.82	0.00	991.82
Pastoral Care Income	4236-236	1,437.00	5,501.10	0.00	5,501.10
Aid to Candidates income	4242-242	0.00	402.64	0.00	402.64
Camp Sale Reserve	4250-250	0.00	8,781.39	8,781.00	0.39
Presbytery Endowment Fund	4292-292	0.00	428.05	428.00	0.05
Subtotal Other Income	4090	2,972.00	133,970.12	72,434.00	61,536.12
Subtotal Contribution Income	4010	15,493.51	399,856.58	374,349.44	25,507.14
MISSION PASS-THRU INCOME	4300				
SYNOD SHARED MISSION	4313				
Synod Program & Mission	4315-315	693.26	3,691.88	0.00	3,691.88
GA SHARED MISSION	4316				
To GA - Theological Ed.	4316-316	16.67	2,845.29	0.00	2,845.29
To G A - General Mission	4317-317	2,240.49	26,801.97	0.00	26,801.97
Subtotal Ga Shared Mission	4316	2,257.16	29,647.26	0.00	29,647.26
GA SPECIAL OFFERING	4341				
GA One Great Hr of Sharin	4342-342	909.30	30,984.11	0.00	30,984.11
GA Pentecost Offering	4344-344	895.20	5,920.21	0.00	5,920.21
GA Peace/Global Msn Ofg.	4346-346	2,341.83	5,461.95	0.00	5,461.95
GA Joy Offering	4348-348	2,835.00	10,068.64	0.00	10,068.64
Subtotal Ga Special Offering	4341	6,981.33	52,434.91	0.00	52,434.91
DISASTER RELIEF	4350				
PDA General Relf DR000148	4351-351	580.00	2,306.69	0.00	2,306.69
US Dis. & Flood DR000191	4352-352	500.00	1,000.00	0.00	1,000.00
Ukraine DR000156	4353-353	100.00	14,068.55	0.00	14,068.55
US Hurricane Response	4356-356	500.00	500.00	0.00	500.00
USA Dis. & Emg DR00015	4357-357	395.00	955.00	0.00	955.00
Hurricane IAN DR000194	4359-358	0.00	1,000.00	0.00	1,000.00

Maumee Valley Presbytery

Income and Expense Statement

02/07/2023 02:06 PM

Consolidated - December 2022 Income and Expense

Page: 2

		Current Period	Year to Date	Annual Budget	Annual Budget Difference
Subtotal Disaster Relief	4350	2,075.00	19,830.24	0.00	19,830.24
GA PRES HUNGER FUND	4362				
GA 2 cts/Cents-Ability	4364-364	0.00	245.54	0.00	245.54
EXTRA COMMITMENT PROJECTS	4370				
Mission Pledge E132192	4371-371	500.00	3,600.00	0.00	3,600.00
Park/Shin Egypt 132192	4375-371	0.00	1,000.00	0.00	1,000.00
White Ryan/Althia E132192	4376-371	0.00	1,000.00	0.00	1,000.00
Subtotal Extra Commitment Projects	4370	500.00	5,600.00	0.00	5,600.00
Subtotal Mission Pass-thru Income	4300	12,506.75	111,449.83	0.00	111,449.83
CHURCH LOAN FUNDS	4400				
CHURCH LOANS INTEREST	4401				
Mandatory Loan Reserve 4%	4405-405	8.65	88.71	0.00	88.71
Subtotal Church Loans Interest	4401	8.65	88.71	0.00	88.71
PASTORAL HOUSING LOANS	4460				
Holmes, Douglas Interest	4463-462	13.88	111.85	0.00	111.85
LOANS TO STUDENTS	4469				
WIESMANN LOAN	4473	0.00	35.07	0.00	35.07
Subtotal Church Loan Funds	4400	22.53	235.63	0.00	235.63
DONOR DESIGNATIONS	4501				
Conger Fund for Pastoral	4502-502	0.00	989.83	990.00	-0.17
Triplett & Wolfe Memorial	4504-505	0.00	113.40	113.00	0.40
Pby-Peace/Global Miss. Fu	4506-506	1,175.74	2,741.24	0.00	2,741.24
Synod Grant- Ohio Campus	4512-512	757.58	3,030.32	0.00	3,030.32
Subtotal Donor Designations	4501	1,933.32	6,874.79	1,103.00	5,771.79
INVESTMENT INCOME	4600				
CASH/CASH EQUIVALENTS	4610				
Cash/Cash Equiv Gain/Loss	4612-612	51,552.46	11,715.98	0.00	11,715.98
BOND INCOME	4614				
Bond Income Gain/Loss	4616-616	-26,884.62	-8,458.43	0.00	-8,458.43
EQUITIES	4619				
Equities Gain/Loss	4621-621	-78,017.78	-288,986.94	0.00	-288,986.94
Subtotal Investment Income	4600	-53,349.94	-285,729.39	0.00	-285,729.39
TOTAL INCOME		-23,393.83	232,687.44	375,452.44	-142,765.00
EXPENSES	5000				
ADMINISTRATON & GOVER. EX	5011				
PBY DIRECTED PER CAPITA P	5012				
To Synod - Per Capita	5016	\$0.00	\$16,666.00	\$16,666.00	\$0.00
To General Assembly-Per C	5018	0.00	46,049.44	46,049.44	0.00
Subtotal Pby Directed Per Capita P	5012	0.00	62,715.44	62,715.44	0.00
VOLUNTEER REIM. MILEAGE	5019				
Leadership Commission	5020	81.48	452.62	2,000.00	1,547.38
Discipleship Commission	5024	0.00	91.20	500.00	408.80
Moderator	5028	0.00	134.80	500.00	365.20
Central Support/ACDC	5030	0.00	118.10	700.00	581.90

Maumee Valley Presbytery

Income and Expense Statement

02/07/2023 02:06 PM

Consolidated - December 2022 Income and Expense

Page: 3

		Current Period	Year to Date	Annual Budget	Annual Budget Difference
Mission Commission	5036	0.00	0.00	100.00	100.00
CRE Team	5040	0.00	0.00	200.00	200.00
Subtotal Volunteer Reim. Mileage	5019	81.48	796.72	4,000.00	3,203.28
PRESBY. EXP (COUNCIL DIR)	5041				
General Assembly Commissi	5048	0.00	25.90	100.00	74.10
Commissions Expense	5050	0.00	305.90	750.00	444.10
Contingency - General	5052	0.00	0.00	1,000.00	1,000.00
Presbytery Meeting Arrang	5054	0.00	352.50	1,600.00	1,247.50
Moderator Expense	5056	0.00	808.70	800.00	-8.70
Permanent Judicial Commis	5057	0.00	0.00	1,000.00	1,000.00
Subtotal Presby. Exp (council Dir)	5041	0.00	1,493.00	5,250.00	3,757.00
PERSONNEL & ADMIN	5060				
PRESBYTER EXP	5061	11,029.57	122,191.56	121,857.00	-334.56
STAFF EXPENSE	5077	8,644.52	106,697.59	116,323.00	9,625.41
Subtotal Personnel & Admin	5060	19,674.09	228,889.15	238,180.00	9,290.85
OFFICE EXPENSE	5116				
Legal Service Fees	5117	0.00	0.00	3,000.00	3,000.00
Background Checks	5119	11.95	56.75	300.00	243.25
Audit Service Fees	5120	0.00	0.00	3,000.00	3,000.00
Office Rent	5130	1,402.33	16,827.96	16,828.00	0.04
TECHNOLOGY	5131	935.68	9,544.88	9,000.00	-544.88
Stationery/Supplies	5140	285.51	3,403.39	3,000.00	-403.39
Postage	5142	225.46	2,275.72	1,500.00	-775.72
Resources/Subscriptions	5143	59.95	403.45	300.00	-103.45
MVP Insurance	5146	448.40	5,340.00	4,382.00	-958.00
Equipment Repair/Maint.,	5150	404.28	4,966.86	6,000.00	1,033.14
Equipment Replacement	5152	304.54	4,545.00	4,000.00	-545.00
Checking Service Fees	5154	276.96	3,104.06	3,500.00	395.94
Paychex Service Fee & Mis	5156	57.51	832.86	500.00	-332.86
Subtotal Office Expense	5116	4,412.57	51,300.93	55,310.00	4,009.07
Subtotal Administraton & Gover. Ex	5011	24,168.14	345,195.24	365,455.44	20,260.20
LEADERSHIP COMMISSION	5300				
COM Retreats/Training	5302	0.00	716.87	1,000.00	283.13
Pastoral Asst. & Sch. COM	5304	0.00	1,127.00	2,000.00	873.00
Pastor Recognition	5306	60.00	893.74	1,000.00	106.26
Subtotal Leadership Commission	5300	60.00	2,737.61	4,000.00	1,262.39
DISCIPLESHIP COMMISSION	5317				
Beer Hymns	5320-174	0.00	0.00	50.00	50.00
Candidate Psychological T	5321	923.00	1,370.34	1,700.00	329.66
Spiritual Dirs/Transforma	5322-178	0.00	1,464.56	500.00	-964.56
Session Minute Review	5326	0.00	0.00	200.00	200.00
Clerk Training	5327	0.00	0.00	500.00	500.00
Communion Training	5328	0.00	0.00	250.00	250.00
Discipleship Events	5329-165	0.00	150.00	3,000.00	2,850.00
Sunday School Curriculum	5330	0.00	0.00	200.00	200.00
Youth Events/Retreat	5331	1,440.00	2,124.94	3,600.00	1,475.06
Triennium Exp. Budget	5333	0.00	3,000.00	3,000.00	0.00

Maumee Valley Presbytery

Income and Expense Statement

02/07/2023 02:06 PM

Consolidated - December 2022 Income and Expense

Page: 4

		Current Period	Year to Date	Annual Budget	Annual Budget Difference
Triennium Exp. Used	5334	0.00	-3,000.00	0.00	3,000.00
Christian Educator Retrea	5335	0.00	0.00	500.00	500.00
Spirit. Formation Retreats	5341-178	0.00	2,652.06	3,000.00	347.94
Conferences Scholarships	5343	0.00	480.00	2,000.00	1,520.00
Boundary Training	5344-176	0.00	448.00	2,500.00	2,052.00
CRE PROGRAM	5346	0.00	0.00	600.00	600.00
Subtotal Discipleship Commission	5317	2,363.00	8,689.90	21,600.00	12,910.10
<b>MISSION COMMISSION</b>	5368				
MT-25 Racial/Economic Jus	5374	2,000.00	4,000.00	10,000.00	6,000.00
Kirkmont Support	5375	1,500.00	6,000.00	6,000.00	0.00
Campus Ministry - Toledo	5376-148	0.00	2,000.00	4,000.00	2,000.00
Emerging Latinx Ministrie	5377	0.00	0.00	5,000.00	5,000.00
Subtotal Mission Commission	5368	3,500.00	12,000.00	25,000.00	13,000.00
<b>PBY DESIGNATED EXPENSES</b>	7200				
King/Dorr Property Taxes	7202-208	0.00	407.90	0.00	-407.90
Insurance Claims Payroll	7230-230	30.00	120.00	0.00	-120.00
Pastoral Care Fund Exp	7236-236	0.00	1,000.00	0.00	-1,000.00
Camp Sale Reserve	7250-250	0.00	4,870.00	0.00	-4,870.00
Subtotal Pby Designated Expenses	7200	30.00	6,397.90	0.00	-6,397.90
<b>MISSION PASS-THRU EXP</b>	7300				
<b>SYNOD SHARED MISSION</b>	7313				
Synod Program & Mission	7315-315	736.94	3,735.56	0.00	-3,735.56
<b>GA SHARED MISSION</b>	7316				
To G A - General Mission	7317-317	2,240.49	26,801.97	0.00	-26,801.97
To GA - Theological Ed.	7319-316	16.67	2,845.29	0.00	-2,845.29
Subtotal Ga Shared Mission	7316	2,257.16	29,647.26	0.00	-29,647.26
<b>GA SPECIAL OFFERING</b>	7340				
GA One Great Hr of Sharin	7342-342	909.30	30,984.11	0.00	-30,984.11
GA Pentecost Offering	7344-344	895.20	5,920.21	0.00	-5,920.21
GA Peace/Global Msn Ofg.	7346-346	2,341.83	5,461.95	0.00	-5,461.95
GA Joy Offering	7348-348	2,835.00	10,068.64	0.00	-10,068.64
Subtotal Ga Special Offering	7340	6,981.33	52,434.91	0.00	-52,434.91
<b>DISASTER RELIEF</b>	7350				
PDA General Relf DR000148	7351-351	580.00	2,506.69	0.00	-2,506.69
US Dis. & Flood DR000191	7352-352	500.00	1,000.00	0.00	-1,000.00
Ukraine DR000156	7353-353	100.00	14,068.55	0.00	-14,068.55
US Hurricane Response	7356-356	500.00	500.00	0.00	-500.00
USA Dis. & Emg. DR00015	7357-357	395.00	755.00	0.00	-755.00
Hurrican IAN DR000194	7359-358	0.00	1,000.00	0.00	-1,000.00
Subtotal Disaster Relief	7350	2,075.00	19,830.24	0.00	-19,830.24
<b>GA PRES HUNGER FUND</b>	7362				
GA 2 cts/Cents-Ability	7364-364	0.00	245.54	0.00	-245.54
<b>EXTRA COMMITMENT PROJECTS</b>	7370				
Mission Support E132192	7371-371	500.00	3,600.00	0.00	-3,600.00
Park/Shin Egypt E132192	7375-371	0.00	1,000.00	0.00	-1,000.00
White Noah/Althia E132192	7376-371	0.00	1,000.00	0.00	-1,000.00

**Income and Expense Statement**

		Current Period	Year to Date	Annual Budget	Annual Budget Difference
Comp. Facil. E123192	7377-371	3,057.66	0.00	0.00	0.00
Subtotal Extra Commitment Projects	7370	3,557.66	5,600.00	0.00	-5,600.00
Subtotal Mission Pass-thru Exp	7300	15,608.09	111,493.51	0.00	-111,493.51
DONOR DESIGNATIONS EXP	7501				
Pby-Peace/Global Miss. Fu	7506-506	120.00	200.00	0.00	-200.00
Synod Grant- Ohio Campus	7512-512	1,000.00	2,000.00	0.00	-2,000.00
Subtotal Donor Designations Exp	7501	1,120.00	2,200.00	0.00	-2,200.00
INVESTMENT WITHDRAWALS	7600				
Cash/Cash Equiv w/d	7612-612	0.00	68,338.24	0.00	-68,338.24
<b>TOTAL EXPENSES</b>		<b>46,849.23</b>	<b>557,052.40</b>	<b>416,055.44</b>	<b>-140,996.96</b>
<b>EXCESS INCOME/EXPENSES</b>		<b>-\$70,243.06</b>	<b>-\$324,364.96</b>	<b>-\$40,603.00</b>	<b>-\$283,761.96</b>

Church Name	Program & Mission (Mission Cause)								Admin & Governance (Per Capita)					
	2022 Pledges				2022 Mission Total Pmts. To Date	2022 Pledge Pmts. To Date	2022 Pledge Balance Due	2022 Unpledged Pmts.	PC Prior Yr Bal.Due	PC PRIOR YRS BALANCE PD	PC PRIOR YRS BALANCE DUE	2022 Assessment	2022 Assesemnt Paid to Date	7C Balance Due
	Pby.	Synod	GA	Total										
Adrian First	700.00	30.00	270.00	1,000.00	1,000.00	1,000.00	0.00	0.00	0.00	0.00	0.00	4,839.90	\$4,839.90	0.00
*Antwerp*	1,461.25	62.62	563.63	2,087.50	2,087.50	2,087.50	0.00	0.00	0.00	0.00	0.00	1,228.59	\$1,228.59	0.00
Blissfield First	700.00	30.00	270.00	1,000.00	1,000.00	1,000.00	0.00	0.00	0.00	0.00	0.00	1,973.19	\$1,050.00	923.19
Bluffton Presbyterian Church	3,850.00	165.00	1,485.00	5,500.00	5,499.96	5,499.96	0.04	0.00	0.00	0.00	0.00	3,723.00	\$3,723.00	0.00
Bowling Green 1st	9,899.40	424.26	3,818.34	14,142.00	14,142.00	14,142.00	0.00	0.00	0.00	0.00	0.00	6,887.55	\$6,887.55	0.00
*Bryan First *	0.00	0.00	0.00	0.00	0.00	0.00	0.00	0.00	0.00	0.00	0.00	6,366.33	\$6,366.33	0.00
Bucyrus First	0.00	0.00	0.00	0.00	0.00	0.00	0.00	0.00	8,575.75	0.00	8,575.75	37.23	\$0.00	37.23
Cadmus First	350.00	15.00	135.00	500.00	500.00	500.00	0.00	0.00	0.00	0.00	0.00	1,749.81	\$1,749.81	0.00
Cecil First	0.00	0.00	0.00	0.00	0.00	0.00	0.00	0.00	11,629.45	0.00	11,629.45	297.84	\$0.00	297.84
Celina First	840.00	36.00	324.00	1,200.00	1,200.00	1,200.00	0.00	0.00	0.00	0.00	0.00	2,308.26	\$2,308.26	0.00
Clyde First	350.00	15.00	135.00	500.00	500.00	500.00	0.00	0.00	0.00	0.00	0.00	2,903.94	\$2,903.94	0.00
Defiance First	5,320.00	228.00	2,052.00	7,600.00	7,600.00	7,600.00	0.00	0.00	0.00	0.00	0.00	3,648.54	\$3,648.54	0.00
Delphos First	100.00	0.00	0.00	100.00	100.00	100.00	0.00	0.00	5,257.24	626.74	4,630.50	409.53	\$409.53	0.00
*Dola*	0.00	0.00	0.00	0.00	0.00	0.00	0.00	0.00	0.00	0.00	0.00	670.14	\$670.14	0.00
Erie First	1,120.00	48.00	432.00	1,600.00	1,200.00	1,200.00	400.00	0.00	0.00	0.00	0.00	781.83	\$781.83	0.00
Findlay Enon Valley	700.00	30.00	270.00	1,000.00	1,000.00	1,000.00	0.00	0.00	0.00	0.00	0.00	1,600.89	\$1,600.89	0.00
Findlay Faith	2,450.00	105.00	945.00	3,500.00	3,500.00	3,500.00	0.00	37.23	0.00	0.00	0.00	1,079.67	\$1,079.67	0.00
Findlay First	6,000.00	1,000.00	1,000.00	8,000.00	8,000.00	8,000.00	0.00	0.00	0.00	0.00	0.00	11,727.45	\$11,727.45	0.00
Forest First	140.00	6.00	54.00	200.00	200.00	200.00	0.00	0.00	0.00	0.00	0.00	335.07	\$335.07	0.00
Fostoria	700.00	30.00	270.00	1,000.00	1,000.00	1,000.00	0.00	0.00	16,484.89	0.00	16,484.89	2,494.41	\$549.14	1,945.27
Fremont Eastside	1,680.00	72.00	648.00	2,400.00	2,400.00	2,400.00	0.00	0.00	0.00	0.00	0.00	781.83	\$781.83	0.00
Fremont First	700.00	30.00	270.00	1,000.00	999.96	999.96	0.04	0.00	0.00	0.00	0.00	3,834.69	\$3,834.69	0.00
Galion First	0.00	0.00	0.00	0.00	0.00	0.00	0.00	0.00	1,528.47	1,528.47	0.00	558.45	\$558.45	0.00
Grand Rapids First	0.00	0.00	0.00	0.00	0.00	0.00	0.00	0.00	7,490.32	0.00	7,490.32	297.84	\$0.00	297.84
Huron First	1,400.00	60.00	540.00	2,000.00	2,000.00	2,000.00	0.00	0.00	54,752.58	0.00	54,752.58	5,063.28	\$5,063.28	0.00



Kenton Trinity	560.00	24.00	216.00	800.00	800.00	800.00	0.00	0.00	0.00	0.00	0.00	1,191.36	\$1,191.35	0.01
Lasalle First	175.00	7.50	67.50	250.00	250.00	250.00	0.00	0.00	0.00	0.00	0.00	930.75	\$930.75	0.00
Lima Faith Christian	1,400.00	60.00	540.00	2,000.00	1,999.87	1,999.87	0.13	0.00	0.00	0.00	0.00	670.14	\$670.14	0.00
*Lima Market St.*	0.00	0.00	0.00	0.00	0.00	0.00	0.00	0.00	0.00	0.00	0.00	4,914.36	\$4,914.36	0.00
Marseilles	350.00	15.00	135.00	500.00	500.00	500.00	0.00	0.00	0.00	0.00	0.00	781.83	\$781.83	0.00
*Maumee First*	0.00	0.00	0.00	0.00	0.00	0.00	0.00	0.00	0.00	0.00	0.00	14,184.63	\$14,184.63	0.00
McComb First	490.00	21.00	189.00	700.00	700.00	700.00	0.00	0.00	0.00	0.00	0.00	1,526.43	\$1,526.43	0.00
Milan	2,520.00	108.00	972.00	3,600.00	3,600.00	3,600.00	0.00	0.00	0.00	0.00	0.00	1,377.51	\$1,377.51	0.00
Monroe First	0.00	0.00	0.00	0.00	0.00	0.00	0.00	0.00	0.00	0.00	0.00	5,472.81	\$5,472.81	0.00
Montpelier First	350.00	15.00	135.00	500.00	500.00	500.00	0.00	0.00	0.00	0.00	0.00	3,723.00	\$3,723.00	0.00
Napoleon First	2,000.00	0.00	0.00	2,000.00	2,000.00	2,000.00	0.00	0.04	0.00	0.00	0.00	2,717.79	\$2,717.80	(0.01)
Norwalk First	6,841.00	0.00	0.00	6,841.00	6,841.00	6,841.00	0.00	0.21	0.00	0.00	0.00	8,860.74	\$8,860.74	0.00
Ottawa First	1,400.00	60.00	540.00	2,000.00	2,000.00	2,000.00	0.00	0.00	0.00	0.00	0.00	2,866.71	\$2,867.00	(0.29)
Palmyra Community	420.00	18.00	162.00	600.00	600.00	600.00	0.00	0.00	0.00	0.00	0.00	1,005.21	\$1,005.21	0.00
Pemberville	700.00	30.00	270.00	1,000.00	1,000.00	1,000.00	0.00	0.00	0.00	0.00	0.00	4,430.37	\$4,430.40	(0.03)
Perrysburg First	1,750.00	75.00	675.00	2,500.00	0.71	0.71	2,499.29	0.00	0.00	0.00	0.00	4,579.29	\$4,579.29	0.00
Port Clinton	700.00	30.00	270.00	1,000.00	1,000.00	1,000.00	0.00	0.00	0.00	0.00	0.00	3,090.09	\$3,090.09	0.00
Raisin	210.00	9.00	81.00	300.00	300.00	300.00	0.00	0.00	0.00	0.00	0.00	781.83	\$781.83	0.00
Sandusky First	0.00	0.00	0.00	0.00	0.00	0.00	0.00	0.00	856.29	856.29	0.00	1,414.74	\$1,414.74	0.00
*Shelby First*	0.00	0.00	0.00	0.00	0.00	0.00	0.00	0.00	0.00	0.00	0.00	1,042.44	\$1,042.44	0.00
Tecumseh First	1,680.00	72.00	648.00	2,400.00	2,400.00	2,400.00	0.00	0.00	0.00	0.00	0.00	5,435.58	\$5,435.58	0.00
Tiffin First	10,500.00	450.00	4,050.00	15,000.00	15,000.00	15,000.00	0.00	0.00	0.00	0.00	0.00	3,909.15	\$3,909.15	0.00
Toledo Christ	2,000.00	100.00	3,000.00	5,100.00	3,825.00	3,825.00	1,275.00	0.00	0.00	0.00	0.00	17,125.80	\$13,299.75	3,826.05
*Toledo Collingwood*	0.00	0.00	0.00	0.00	0.00	0.00	0.00	0.00	12,000.62	1,500.30	10,500.32	3,536.85	\$3,536.85	0.00
*Toledo Eastminster*	0.00	0.00	0.00	0.00	0.00	0.00	0.00	0.00	0.00	0.00	0.00	3,425.16	\$3,425.16	0.00
*Toledo Fairgreen	0.00	0.00	0.00	0.00	0.00	0.00	0.00	0.00	0.00	0.00	0.00	2,941.17	\$2,941.17	0.00
Toledo Glendale	700.00	30.00	270.00	1,000.00	1,000.00	1,000.00	0.00	0.00	0.00	0.00	0.00	1,303.05	\$1,303.05	0.00

Toledo Hanmi Covenant	0.00	0.00	0.00	0.00	0.00	0.00	0.00	0.00	0.00	0.00	0.00	223.38	\$223.38	0.00
Tontogany	700.00	30.00	270.00	1,000.00	750.00	750.00	250.00	0.00	0.00	0.00	0.00	2,084.88	\$2,084.88	0.00
*Upper Sandusky 1st*	0.00	0.00	0.00	0.00	0.00	0.00	0.00	0.00	0.00	0.00	0.00	5,435.58	\$5,435.58	0.00
*Van Buren*	0.00	0.00	0.00	0.00	0.00	0.00	0.00	0.00	0.00	0.00	0.00	558.45	\$558.45	0.00
*Van Wert First*	0.00	0.00	0.00	0.00	0.00	0.00	0.00	0.00	0.00	0.00	0.00	2,941.17	\$2,941.17	0.00
*Venedocia Salem*	0.00	0.00	0.00	0.00	0.00	0.00	0.00	0.00	1,629.80	0.00	1,629.80	3,015.63	\$3,015.63	0.00
Waterville First	2,100.00	90.00	810.00	3,000.00	3,000.00	3,000.00	0.00	0.00	0.00	0.00	0.00	2,494.41	\$2,494.41	0.00
West Bethesda	2,800.00	120.00	1,080.00	4,000.00	4,000.00	4,000.00	0.00	0.00	0.00	0.00	0.00	2,308.26	\$2,308.26	0.00
West Eagle Creek	1,400.00	60.00	540.00	2,000.00	2,000.00	2,000.00	0.00	0.00	0.00	0.00	0.00	297.84	\$297.84	0.00
West Unity	0.00	0.00	0.00	0.00	0.00	0.00	0.00	0.00	0.00	0.00	0.00	2,717.79	\$2,717.79	0.00
Total Current													\$183,588.34	7,327.10
Personal Mission/Individual Contributions											7.00			
Prior yr. Mission/Per Cap				0.00			0.00	\$0.00		4,511.80				
TOTAL	80,206.65	3,811.38	28,402.47	112,420.50	107,996.00	107,996.00	4,424.50	37.48	120,205.41	4,511.80	115,693.61	190,915.44	\$183,588.34	7,327.10
Program & Mission Gifts - Pby (budget)	96,000.00													
												Personal PC	37.23	
												Personal PC	37.23	
												Personal Pc	37.23	
					Recvd YTD	108,033.48						Recvd YTD	183,700.03	
												tfr to	0.00	
													0.00	
														collected
Pby. Mission Pledges YTD	80,206.65													94% of current PC
Bal. unpledged	15,793.35							12/31/22						







**Admin & Governance (Per Capita)**

<b>PC Prior Yr Bal.Due</b>	<b>YRS BALANCE PD</b>	<b>YRS BALANCE DUE</b>	<b>2021 Assessment</b>	<b>2022 Assesemnt Paid to Date</b>	<b>Balance Due</b>
0.00	0.00	0.00	4,839.90	\$4,839.90	0.00
0.00	0.00	0.00	1,228.59	\$1,228.59	0.00
0.00	0.00	0.00	1,973.19	\$1,050.00	923.19
0.00	0.00	0.00	3,723.00	\$3,723.00	0.00
0.00	0.00	0.00	6,887.55	\$6,887.55	0.00
0.00	0.00	0.00	6,366.33	\$6,366.33	0.00
8,575.75	0.00	8,575.75	37.23	\$0.00	37.23
0.00	0.00	0.00	1,749.81	\$1,749.81	0.00
11,629.45	0.00	11,629.45	297.84	\$0.00	297.84
0.00	0.00	0.00	2,308.26	\$2,308.26	0.00
0.00	0.00	0.00	2,903.94	\$0.00	2,903.94
0.00	0.00	0.00	3,648.54	\$3,648.54	0.00
5,257.24	226.74	5,030.50	409.53	\$409.53	0.00
0.00	0.00	0.00	670.14	\$670.14	0.00
0.00	0.00	0.00	781.83	\$781.83	0.00
0.00	0.00	0.00	1,600.89	\$1,600.89	0.00
0.00	0.00	0.00	1,079.67	\$1,079.67	0.00
0.00	0.00	0.00	11,727.45	\$11,727.45	0.00
0.00	0.00	0.00	335.07	\$335.07	0.00
16,484.89	0.00	16,484.89	2,494.41	\$549.14	1,945.27
0.00	0.00	0.00	781.83	\$781.83	0.00
0.00	0.00	0.00	3,834.69	\$1,917.35	1,917.34
1,528.47	1,528.47	0.00	558.45	\$558.45	0.00
7,490.32	0.00	7,490.32	297.84	\$0.00	297.84
54,752.58	0.00	54,752.58	5,063.28	\$0.00	5,063.28
0.00	0.00	0.00	1,191.36	\$0.00	1,191.36
0.00	0.00	0.00	930.75	\$930.75	0.00
0.00	0.00	0.00	670.14	\$670.14	0.00
0.00	0.00	0.00	4,914.36	\$4,914.36	0.00
0.00	0.00	0.00	781.83	\$781.83	0.00
0.00	0.00	0.00	14,184.63	\$14,184.63	0.00
0.00	0.00	0.00	1,526.43	\$1,526.43	0.00
0.00	0.00	0.00	1,377.51	\$0.00	1,377.51
0.00	0.00	0.00	5,472.81	\$0.00	5,472.81
0.00	0.00	0.00	3,723.00	\$3,723.00	0.00
0.00	0.00	0.00	2,717.79	\$679.45	2,038.34
0.00	0.00	0.00	8,860.74	\$8,860.74	0.00
0.00	0.00	0.00	2,866.71	\$2,867.00	(0.29)
0.00	0.00	0.00	1,005.21	\$1,005.21	0.00
0.00	0.00	0.00	4,430.37	\$1,846.00	2,584.37
0.00	0.00	0.00	4,579.29	\$2,200.00	2,379.29
0.00	0.00	0.00	3,090.09	\$3,090.09	0.00
0.00	0.00	0.00	781.83	\$781.83	0.00

856.29	856.29	0.00	1,414.74	\$0.00	1,414.74
0.00	0.00	0.00	1,042.44	\$1,042.44	0.00
0.00	0.00	0.00	5,435.58	\$5,435.58	0.00
0.00	0.00	0.00	3,909.15	\$3,909.15	0.00
0.00	0.00	0.00	17,125.80	\$4,433.25	12,692.55
12,000.62	0.00	12,000.62	3,536.85	\$0.00	3,536.85
0.00	0.00	0.00	3,425.16	\$0.00	3,425.16
0.00	0.00	0.00	2,941.17	\$2,941.17	0.00
0.00	0.00	0.00	1,303.05	\$1,303.05	0.00
0.00	0.00	0.00	223.38	\$223.38	0.00
0.00	0.00	0.00	2,084.88	\$2,084.88	0.00
0.00	0.00	0.00	5,435.58	\$0.00	5,435.58
0.00	0.00	0.00	558.45	\$558.45	0.00
0.00	0.00	0.00	2,941.17	\$2,941.17	0.00
1,629.80	0.00	1,629.80	3,015.63	\$2,412.00	603.63
0.00	0.00	0.00	2,494.41	\$2,494.41	0.00
0.00	0.00	0.00	2,308.26	\$2,308.26	0.00
0.00	0.00	0.00	297.84	\$297.84	0.00
0.00	0.00	0.00	2,717.79	\$2,717.79	0.00
				\$135,377.61	
	2,611.50				
120,205.41	2,611.50	117,593.91	190,915.44	\$135,377.61	55,537.83
			Personal PC	37.23	
			Personal PC	37.23	
			Personal Pc	37.23	
			Recvd YTD	135,489.30	
			tfr to	0.00	
				0.00	
					collected
				70%	of current PC

## Leadership Commission

### Report to Presbytery

#### Recommendation to Presbytery for vote:

Regarding Glendale Presbyterian Church: Upon receipt of the request of the congregation, Maumee Valley Presbytery concurs with the dissolution of the congregation with all assets and liabilities to be transferred to Waterville Presbyterian Church.

The meeting of the congregation is Sunday, February 19, 2023 to approve the dissolution of the congregation and members will transfer to Waterville Presbyterian Church on April 9, 2023 (Easter). This has been in conversation for several months.

#### Actions taken on behalf of Presbytery:

1. **Approved** the terms of call between the Rev. Jan Desterhaft and First, Montpelier. The terms of call, effective January 15, 2023 in sum are:

Salary \$ 32,680

Housing 14,000

Total effective salary for pension dues \$ 46,680

SECA offset \$ 3,571.02

Total 50,251

Full pension and medical, death and disability

Reimbursables \$3,200

Continuing Ed allowance 1,200

Total terms work out to \$ 72,845.22

4 weeks vacation including 4 Sundays and weeks continuing ed time, including 2 Sundays

2. **Appointed** Bob Butcher as Moderator of Session for Bluffton. The Pastor Nominating Committee is elected and has been trained.
3. **Approved** the Installation Commission for the Rev. J.H. Vanlal Hruaia on Sunday, Dec 18 at 3 pm at First Presbyterian Church, Van Wert OH with the following members:

Chas Myers, Moderator, Billy Knoll (RE Van Wert), the Revs. Don Leckrone, Tom Steensma and Ann Wasson, with guest, the Rev. David Van Dam (Petoskey MI) invited to preach the sermon.



4. **Approved** the following validated ministries of minister members of the presbytery for the calendar year 2023, and authorized the Stated Clerk to sign and file any necessary documentation during the year for:
  - a. Julie Kling, Terra State Community College (she is also temporary supply pastor at First, Fremont)
  - b. William Middleton, US Navy chaplain
  - c. Susan Rowland Miller, Habitat for Humanity
  - d. Amy Remaklus, Director of Toledo Campus Ministry
  - e. Stephen Speakman, Mercy St Vincent Hospital, Director of C.P.E. program, Toledo, Ohio
  - f. Matthew Zuehlke, pastor at Zion Evangelical Lutheran Church, Gibsonburg, OH (full communion partner ELCA)
  
5. **Renewed** the temporary supply contract between Heather Johnston- Deeb and LaSalle Presbyterian Church effective January 1, 2023 - part time - \$ 21, 450 (20-25 hours per week) with 4 weeks vacation including 4 Sundays.
  
6. **Renewed** the CRE contract for 2023 between Nancy Berkheiser and West Unity, up to 25 hours per week. New terms are \$ 2400 per month, plus \$ 600 continuing ed. Reimbursables at \$ 1600. 2 weeks including Sundays for Continuing Ed and 4 weeks including 4 Sundays for vacation.
  
7. **Approved** the temporary supply contract between Huron and Sara Hodsdon for 1 year beginning January 1, 2023: \$ 52,500 salary, 6, 000 housing, \$ 4475 403b contribution, total effective salary of \$ 62975; \$ 6298 pension dues, \$ 4400 professional expenses; 4 weeks vacation, 2 weeks study leave, including Sundays.

### **Announcements:**

Thank you to the congregation leaders who have sent in their AR-3 forms with pastor, CRE and temporary supply contract information; to be approved by Presbytery at the May meeting. If you have not had a chance to get that report into the Presbytery office, please do so as soon as possible.

### **Comings and Goings**

Jan Desterhaft, new pastor at First Montpelier

Karen VanderPloeg, moving to Madison, Indiana

Respectfully Submitted

Ann Wasson, Leadership Commission Moderator with

Ron Boyd, Carole Burnworth, Doris Chandler, Jeanne Gay, Julie Kling, Tom Steensma.  
Karen VanderPloeg and Joel Youkers.

**From:** David Hammond & Jim Miller  
**Date:** February 3, 2023  
**Subject:** Discipleship Commission Report

---

#### **ACTIONS TAKEN ON BEHALF OF PRESBYTERY:**

1. Michelle McDonald has requested her withdrawal from the Preparation for Ministry process. The Discipleship Commission approved her request at the January 5, 2023 meeting.

#### **RECOMMENDATIONS TO PRESBYTERY:**

#### **INFORMATIONAL ITEMS:**

##### **1. Spiritual Formation Team**

- 2023 Spring Retreat – April 23-25 – Open to All – Pastors, Elders, Deacons, Laity, and Spouses
- 2023 Fall Retreat – October 8-10
- 2024 Spring Retreat – April 14-16

##### **2. Kirkmont – David Bartley**

- Camp Rejoice
- REKIndle Fall Youth Retreat

##### **3. Boundary Training**

- MVP Boundary Training is being planned for Spring 2023.
- Online options also available through the Synod

##### **4. CRE Program Resources**

- [Pathways to Online Courses](#)
- The Christian Life – February 28 – April 4, 2023
- Mission & Evangelism – April 18 – May 23, 2023
- Pastoral Care – February 23 – March 30, 2023
- Preaching – April 27 – June 1, 2023

Respectfully Submitted – David Hammond (Co-Chair), Jim Miller (Co-Chair), Kevin Clancy, Sara Hodsden, Ken Krieger, Amy Remaklus, Matt Meinke (Ex-Offi



## Michael Gehrling

### **Associate for the Northeast Region and Assessments, 1001 New Worshiping Communities**

[michael.gehrling@pcusa.org](mailto:michael.gehrling@pcusa.org) | (502) 381-6174

The Rev. Michael Gehrling is the associate for the 1001 Northeast Region, which include states as far west as Indiana. Michael also directs the 1001 assessment programs: Discerning Missional Leadership, Exploring Missional Leadership, and the Missional Leadership Quiz.

Michael is passionate about helping communities rely increasingly on the Holy Spirit. He believes that ancient practices of discernment can lead communities to innovative new ministries, that our best tool for making new disciples is prayer, and that the best way a person can grow in their faith is to share it with others. Michael is based in Pittsburgh, and when he's not working, he can often be found enjoying his favorite hobby – West Coast swing dancing.

*Maumee Valley Presbytery welcomes Michael, who will join our February 2023 Presbytery meeting, and offer a 1001 Plenary Presentation and Workshop after the main meeting.*

# General Presbyter Report

---

February 2023

For our Common Life:

**1** **1001 New Worshiping Communities** Being called to plant New Worshiping Communities is a leap of faith. It has been my hope and dream for Maumee Valley Presbytery that we would grow in our hunger for NWC's and dare to make that leap of faith, not once, but 20 times in the



next 10 years. We need to let go of our fears, let go of our past failures, let go of the church of yesteryear, let go of our one dimensional thinking about NWCs, and dare to dream big with God once again. **Let's plant 20 new worshipping communities in Maumee Valley in the next 10 years.**

presentation, and also an hour Workshop at the end of the meeting. I hope you will be able to stick around. Michael is the 1001 New Worshiping Communities Region Associate for the Northeast, and is part of the Presbyterian Mission Agency national staff. He can not just inspire us, but also point us to the massive amount of resources and training that is available through our national agency.

Michael Gehrling can help us. He will be joining us for our presbytery meeting, offering a 20-minute Plenary

It is with joy we give Michael a big Maumee Valley welcome, and pray that he nurtures a hunger in us for new expressions of the church in this time and place.

Join me in dreaming big and in welcoming Michael as he ignites our faith. May our spirits be open.

## **2** Ordiversaries!

At our last meeting in 2022, I acknowledged some Ordination Anniversaries. There were some amazing milestones. In 2023, there are many more! Please join me on February 21 in our virtual meeting, as we celebrate these amazing milestones, namely a 70 Year Ordination anniversary for Rev. George Bell. Wow!!

You can check out the full list for 2023, attached to my report. If there are any corrections or additions you know of, please call this to my attention before the meeting.

### 3 Presbyterian Mission Connections

There are so many ways to make Mission connections. Are you looking for ways to enhance worship at your church with rich stories of Presbyterians in mission? There are an abundance of resources at your fingertips.



Perhaps you are looking for rich stories of our world mission co-workers, or you are wanting to connect with and help fund one of our mission co-workers in a specific country. Please check out <https://www.presbyterianmission.org/ministries/mission-connections/>

There you can discover feature stories and videos of mission co-workers, subscribe to their newsletters, find a Mission Personnel Guide, as well as information about how to host them virtually or schedule visits. If you are the Mission Elder at your church, check this page out, subscribe to the news there, and share abundantly.

Perhaps you are looking for daily readings about mission to share in worship or share in a newsletter. Today in the Mission Yearbook: February 21, 2023, is about FPC of Royal Oak, Michigan and their pastor Rev Emma Nickel and her new podcast series and ways they are reaching the “spiritual but not religious” crowd.

<https://www.presbyterianmission.org/yearbook/>

**4 MVP Newsletter** - The Newsletter is a great way to connect in with the many resources we have. As presbytery commissioner you may want to include in your report to your session an invitation to join the newsletter list. <https://mailchi.mp/4fbe4c4d95a5/newslettersignup>

Help us be the connectional people we desire to be!

### 5 Spiritual Direction

As your General Presbyter, I am aware that part of my calling is to be a spiritual leader among you. One of the great joys this last year has been studying to become a Spiritual Director.



Are you looking to deepen your prayer life or your relationship to God? Spiritual Direction may be for you. Three of us in the presbytery are undertaking this journey – Cathy Johnson-Paine, Tom Polker, and myself. We are engaged in a Spiritual Director Practicum with Sr. Nancy Brousseau, a Dominican Sister

out of Grand Rapids, Michigan. It is a time in our development as Directors/Companions to get more practice. Are you interested in Spiritual Direction? Because a couple of us are still open to potential directees. Because we are in a process of learning, this is offered free at this time.

I would encourage anyone needing a Spiritual Director to please contact Tom Polker at 419-466-9877.

Spiritual direction is “help given by one Christian to another which enables that person to pay attention to God’s personal communication to him or her, to respond to this personally communicating God, to grow in intimacy with this God, and to live out the consequences of the relationship.” (William A. Barry and William J. Connolly, *The Practice of Spiritual Direction*)

This relationship in Spiritual Direction (also called Spiritual Companionship) is a conversational one in which one Christian – who has been or is being trained in the “art” of Spiritual direction – serves as a companion to another Christian on the journey of faith, enabling and encouraging that person to pay attention, respond, grow, and live out what they are hearing and experiencing in their relationship with God.

**Maumee Valley Presbytery**  
**Necrology Report February 21, 2023**

**Minister Members**

Rev. Wilson "Bill" Flann Wood    05/21/2022  
Rev. Dean Michael Carzoo        07/22/2022

**Adrian First Presbyterian Church**

James Dickson                    01/12/2022  
Kathryn Locker                  03/16/2022

**Bluffton Presbyterian Church**

Marilyn Bullock                01/21/2022  
Jeanette Warren                01/22/2022  
Sally Reeder                    04/07/2022  
Judy Evans                      07/27/2022

**Bowling Green First Presbyterian Church**

Elizabeth Ann Titus            11/28/2022

**Bryan First Presbyterian Church**

Robert Chrismer                02/06/2022  
Thomas Tilton                  02/26/2022  
Lachlan Ohman                 12/09/2022

**Clyde First Presbyterian Church**

Larry Norman                    04/21/2022

**Delphos First Presbyterian Church**

Betty Schmelzer                03/07/2022

**Erie Presbyterian Church**

Robert Nunemaker            06/02/2022

**Enon Valley Presbyterian Church**

Gerald Marvin                    07/24/2022

**Findlay First Presbyterian Church**

Norm Nicholson                05/27/2022

**Forest First Presbyterian Church**

Walter Eugen Burk            05/02/2022

**Fostoria First Presbyterian Church**

David Zoll                        02/27/2022

**Fremont First Presbyterian Church**

Dr. John G. Roush              07/19/2022

**Huron First Presbyterian Church**

Priscilla Auble                03/14/2022  
June Hanes                      06/24/2022

**Kenton United Presbyterian Church**

Alice Downey                  09/07/2022  
Milton Louis "Lou" Downey    12/22/2022

**LaSalle First Presbyterian Church**

Helen Garner                  01/29/2022  
Eliza Navarre                 04/21/2022  
Judith Bargeon                08/14/2022

**Lima Market Street Presbyterian Church**

William D. Bell                02/08/2022  
Ronald P. Bell                 09/26/2022  
James E Meredith              12/22/2022

**Maumee First Presbyterian Church**

Orthalla A Swalla              08/21/2022

**McComb First Presbyterian Church**

Mary Ellen Rader              06/14/2022

**Monroe First Presbyterian Church**

Harold Reese                  01/14/2022  
Lynn Geiman                  04/01/2022  
Scott Cornoyer                04/29/2022  
Greg Hunter                    07/05/2022

**Montpelier First Presbyterian Church**

Joyce Storrer                 02/06/2022  
George Copeland               10/26/2022

**Napoleon First Presbyterian Church**



**Maumee Valley Presbytery**  
**Necrology Report February 21, 2023**

Kathryn Rubinstein 12/10/2022  
 April Brown 12/30/2022

Sally Ann Chojhaclie 12/02/2022

**Norwalk Presbyterian Church**

Frank McDaniel 07/11/2022

**Ottawa Presbyterian Church**

Warren Smith 03/07/2022

**Palmyra Community Presbyterian Church**

Doris Love 05/12/2022

**Pemberville Community Presbyterian Church**

James Dewyre 06/30/2022

**Perrysburg First United Presbyterian Church**

James Gilmore 02/17/2022  
 Richard Currie 02/24/2022  
 Lois Rubright 09/06/2022

**Tecumseh First United Presbyterian Church**

Karen E. Travis 03/18/2022  
 Thomas Elwood Glotfelty 05/25/2022  
 Dean Ronald Polbeam 09/20/2022

**Tiffin First Presbyterian Church**

Faye Lyon 02/13/2022  
 Dr, Kenneth Davison 04/14/2022  
 Virginia Davision 05/12/2022  
 Nancy Cook 11/01/2022

**Toledo Christ Presbyterian Church**

Roger Howell 02/02/2022

**Toledo Collingwood Presbyterian Church**

Josephine Van Wagner 05/11/2022  
 Jack L. Tongring 07/05/2022  
 Carolyn Peterson 11/13/2022  
 Jany's Zimmerman 11/13/2022  
 Lynee Long 11/17/2022  
 Charles A. Henle 11/26/2022

**Toledo Eastminster United Presbyterian Church**

Linda Murphy 03/13/2022  
 Richard B. Corado 02/08/2022

**Toledo Glendale Presbyterian Church**

Peg Wampler 10/21/2022

**Tontogany First Presbyterian Church**

John Robinson 04/26/2022  
 Thelma Whitmer 05/10/2022

**Upper Sandusky First Presbyterian Church**

Arden Heckathorn 01/07/2022  
 Thelma Richardson 08/21/2022  
 Helen Oklok 12/12/2022

**Van Wert Presbyterian Church**

Ed Conover 01/21/2022  
 Phillip Reyman 01/29/2022  
 Don Uhl 02/22/2022  
 Clarence Ringwald 05/31/2022  
 Marilyn Jones 08/08/2022  
 Aaron Mosier 09/17/2022

**Venedocia Salem First Presbyterian Church**

Jean Owens 03/12/2022  
 Ronald Richards 10/05/2022

**Waterville First Presbyterian Church**

Jim Plotts 01/04/2022

## **COMMISSIONING OF REVEREND SARA HODSDEN**

Greetings to all. First Presbyterian Church Huron would like to announce the Commissioning of Reverend Sara Hodsden on Sunday, February 26, 2023.

Rev. Hodsden would enjoy her friends and colleagues from Maumee Valley Presbytery to celebrate with her and her Church family on this special day.

Our worship service will be at 10:00 am in the Church sanctuary. A luncheon will be held in Fellowship Hall at 11:30 am. We will reconvene in the sanctuary at 1:00 pm for Rev. Hodsden's Commissioning service.

We are all looking forward to seeing those of you who can celebrate with us on such a significant day for our Church family.

God's blessings to you all.

### Ordination Milestones/Anniversaries in 2023

#### 70 Years

George L Bell (6/19/1953-Toledo)

#### 60 Years

David C Koch (10/1/1963-Cincinnati)

#### 55 Years

Gavin Pitt (6/4/1968-Chicago)

Henry Snedeker-Meier (6/9/1968-New Castle)

#### 50 Years

Jack Lemon (6/6/1973-Detroit Conference UMC)

Ricky Hoff (6/10/1973-Chicago)

Ralph Middleton (7/1/1973-Transylvania)

#### 40 Years

David Good (1/23/1983-Detroit)

#### 30 Years

Ann Marie Montgomery (9/5/1993-Western Kentucky)

#### 20 Years

Jin Seung Kim (4/22/2003-Eastern/Korean Presbyterian Church in America)

James Hodsdon (8/28/2003-Muskingum Valley)

#### 15 Years

Matthew Zuehlke (7/27/2008-Quaker/Friends-Wilmington Yearly Meeting of Friends)

Thomas Emery (9/28/2008-Cincinnati)

#### 5 Years

Mary Beth McCandless (5/20/2018-Mid-Kentucky)

February 2023



# The Synod of the Covenant

Presbyterian Church (U.S.A.)

## 2023 Upcoming Synod Programs and Ministry

- 3/1 10:00 – 11:30 by zoom: Preaching Workshop **“Preaching about Racism in an Era of CRT Bans”** with Rev. Carolyn Helsel, PhD, of Austin Seminary
- 3/9, 3/16, and 3/23 1:00 – 2:00 by zoom: **The Church and Mental Health** webinar (Science for the Church)
- 4/5 No Preaching Workshop due to Holy Week
- 4/20, 4/27, and 5/4 10:00 – 11:30 by zoom: **Pathways to Belonging: Overcoming Clergy Loneliness** webinar (LeaderWise)
- 4/25-26/23 1:00 – 3:30 pm by zoom: **Boundaries Training** (LeaderWise)
  - Also offered by zoom 10/2-3/23 6:00 – 8:30 pm and 11/7-8/23, 1:00 – 3:30 pm
- 5/10/23 10:00 am – 12:30 pm by Zoom: **The Leader’s Table** Webinar (The Missional Network)
- 9/11 and 9/14/23 6:00 – 8:30 by Zoom: **Child Sexual Abuse Protection Training** (LeaderWise)
- 9/13, 9/27, 10/11, 10/25/23 10:00 – 11:30 am by Zoom: **The Leader’s Table** Cohort meetings
- **Anti Racism Training** Pending for Fall 2023

For more information contact Synod Executive Chip Hardwick at [chip@synodofthecovenant.org](mailto:chip@synodofthecovenant.org) or 309-530-4578.

*We’re the Synod of the Covenant.*

*In our Synod, we’ll try anything to equip and support leaders for God’s emerging, creative future.*